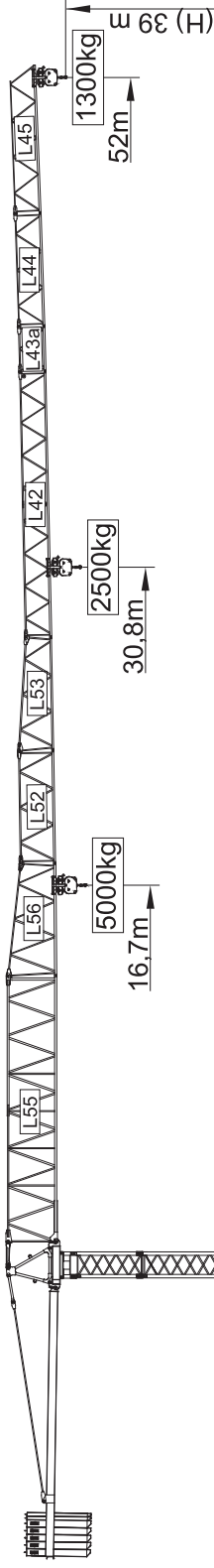


50m - 1.400kg **I** 45m - 1.600kg **II** 40m - 1.800kg **III** 35m - 2.000kg **IV** 31m - 2.300kg **V** 26m - 2.800kg **VI**



Yük Diagramı Cargas.Lasten.Charges.Cargos.Carichi.Yükler. ГРУЗОПОДЪЕМНОСТЬ

Icon	Capacity	Section	Height (m)	Weight (kg)	Weight (kg)	Weight (kg)	Weight (kg)	Weight (kg)	Weight (kg)	Weight (kg)	Weight (kg)	Weight (kg)	Weight (kg)	Weight (kg)	Weight (kg)	Weight (kg)	Weight (kg)	Weight (kg)
	12000 kg 5x2000+ 2x1000 kg	L56	52m	5000kg	16.7m	5000	5000	5000	5000	5000	5000	5000	5000	5000	5000	5000	5000	5000
	11000 kg 5x2000+ 1x1000 kg	L55	50m	5000kg	16.9m	5000	5000	5000	5000	5000	5000	5000	5000	5000	5000	5000	5000	5000
	9000 kg 4x2000+ 1x1000 kg	L54	45m	5000kg	16.9m	5000	5000	5000	5000	5000	5000	5000	5000	5000	5000	5000	5000	5000
	8000 kg 3x2000+ 2x1000 kg	L53	40m	5000kg	16.5m	5000	5000	5000	5000	5000	5000	5000	5000	5000	5000	5000	5000	5000
	7000 kg 3x2000+ 1x1000 kg	L52	35m	5000kg	15.7m	5000	5000	5000	5000	5000	5000	5000	5000	5000	5000	5000	5000	5000
	7000 kg 3x2000+ 1x1000 kg	L51	31m	5000kg	15.6m	5000	5000	5000	5000	5000	5000	5000	5000	5000	5000	5000	5000	5000
	6000 kg 2x2000+ 2x1000 kg	L50	26m	5000kg	15.5m	5000	5000	5000	5000	5000	5000	5000	5000	5000	5000	5000	5000	5000

