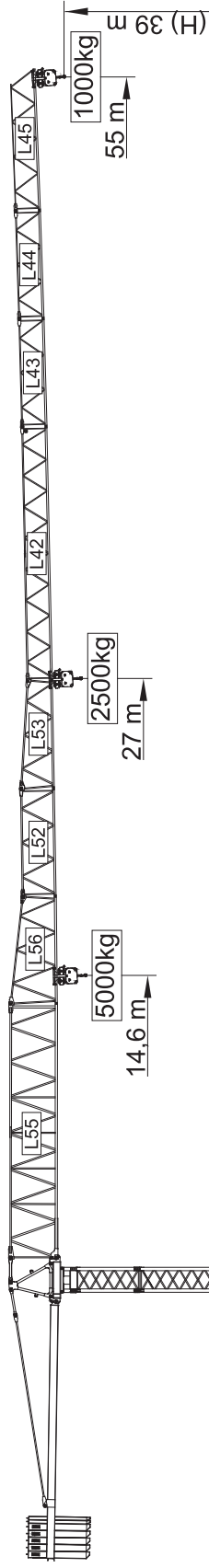


50m - 1.250kg **I** 45m - 1.500kg **II** 40m - 1.800kg **III** 33m - 2.200kg **IV** 28m - 2.500kg **V**



Yük Diagramı Cargas.Lasten.Charges.Cargas.Carichi.Yükler. Грузоподъёмность

Icon	Section Length (m)	Section Load (kg)	Section Load (kg/m)	Section Height (m)	13	18	23	28	33	40	45	50	55
	55m	12000 kg 5x2000 + 2x1000 kg	5000 кг/м	27 m	2500	2500	2500	2500	2000	1600	1400	1200	1000
	50m	11000 kg 5x2000 + 1x1000 kg	5000 кг/м	28,8 m	2500	2500	2500	2500	2000	1600	1400	1200	1000
	45m	9000 kg 4x2000 + 1x1000 kg	5000 кг/м	29,7 m	2500	2500	2500	2500	2130	1670	1440	1250	1000
	40m	8000 kg 3x2000 + 2x1000 kg	5000 кг/м	30,5 m	2500	2500	2500	2500	2210	1740	1500	1250	1000
	33m	7000 kg 3x2000 + 1x1000 kg	5000 кг/м	29,6 m	2500	2500	2500	2500	2280	1800	1600	1400	1200
	28m	6000 kg 2x2000 + 2x1000 kg	5000 кг/м	28 m	2500	2500	2500	2500	2280	1800	1600	1400	1200

